

## OBLIGATIONS FOR SUPPLIERS

- Suppliers will provide dealers the new EU Energy Label with each product free of charge
- Suppliers will make available a product fiche with any kind of literature that accompanies the product
- Suppliers are responsible for the accuracy of the information provided

## OBLIGATIONS FOR DEALERS

- Attach in a clearly visible way, the supplied label on the outside of the front or top of the products displayed in shops
- Make available to end-users the product fiche in the brochure or in any other literature that accompanies the product
- In case of distance selling and other forms of selling, where end-users cannot see the product displayed, make sure that potential end-users are provided with the mandatory information before purchase
- Any advertisement or promotional material for a specific model which discloses energy related, or price or technical information, must indicate the energy efficiency class of that model

The label accompanying the product is the supplier's responsibility.

**Dealers are required to use the label provided by the suppliers.**

## TIMETABLE

The dates stated in the timetable below are indicative and concern refrigerating appliances, washing machines and dishwashers only.

### > November 2010

Regulations published in the EU Official Journal

### > December 2010

Possibility for suppliers to use the new EU Energy Label voluntarily

### > December 2011

Mandatory supply of the new EU Energy Label (The old label may no longer be supplied)

### > April 2012

Mandatory to mention the energy class in all communication material where energy-related, price or technical information is disclosed

**Products with the new label will coexist and be displayed with products bearing the old label.**

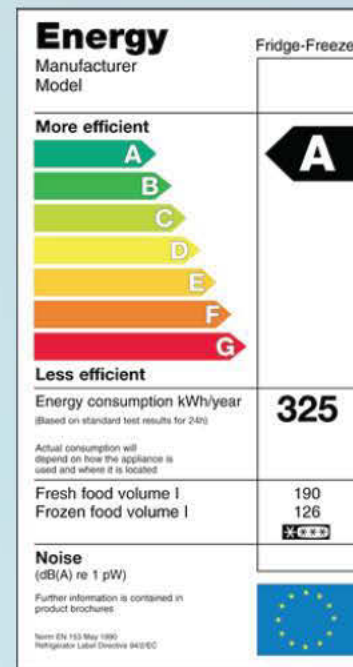
**Products placed on the market before December 2011 and displaying the old label may still be sold without any time constraints.**

The information contained in this leaflet is not legally binding and for general information purposes only. It is provided by the European household appliance industry represented by CECED ([www.cecled.eu](http://www.cecled.eu)). The information should not be regarded as final. The specific layout and content of the new labelling scheme described are subject to confirmation by the European Commission, the European Parliament and the Member States.

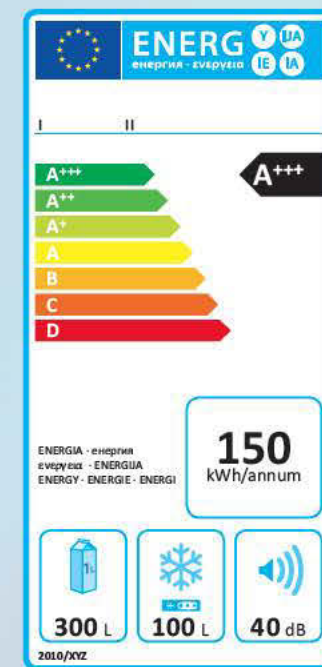
# NEW ENERGY LABEL

- > Household refrigerating appliances
- > Washing machines
- > Dishwashers

## OLD LABEL



## NEW LABEL



[www.newenergylabel.eu](http://www.newenergylabel.eu)

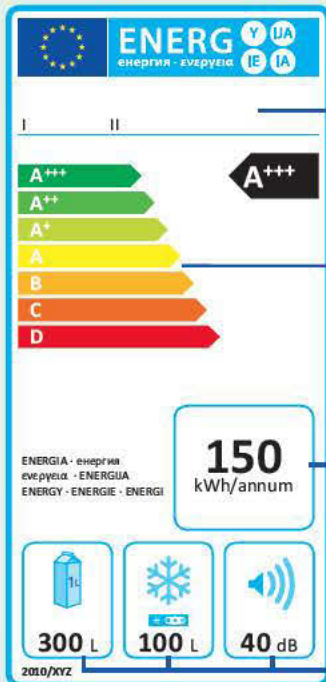


## ENERGY EFFICIENCY “Beyond A”

The new EU Energy Label will:

- Add up to three additional classes, A+, A++, and A+++ to the original A to G classification scheme
- Be identical in all EU27 Member States
- Be language-neutral as texts will be replaced by pictograms
- Be printed in one piece
- Indicate noise level of the product

## ELEMENTS COMMON TO ALL LABELS



Supplier's name or trademark and model identifier

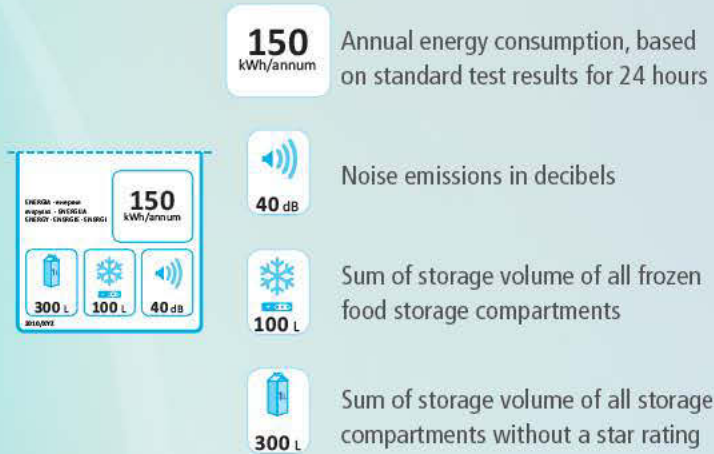
Additional energy classes: A+, A++, A+++

Annual energy consumption

Pictograms highlight selected performances and characteristics

Depending on the appliance, the number of **energy class strips** and/or **pictograms** can change.

## REFRIGERATING APPLIANCES



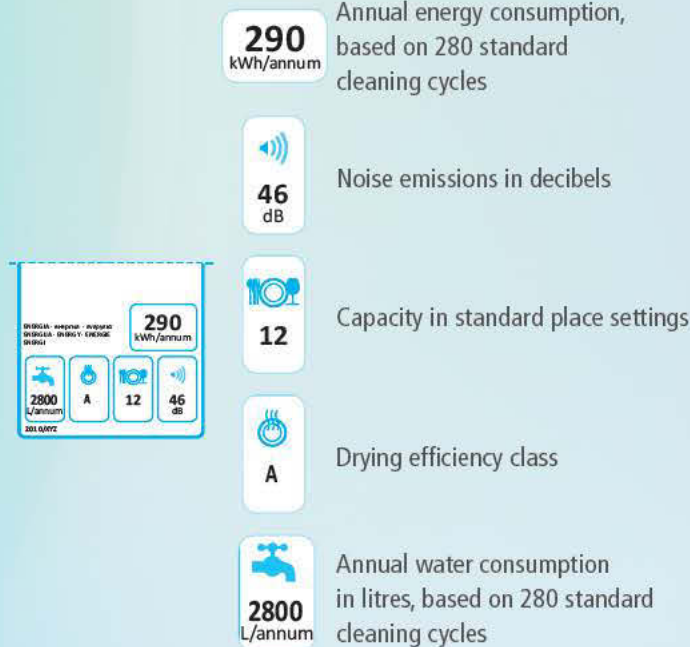
**150** kWh/annum  
Annual energy consumption, based on standard test results for 24 hours

**40** dB  
Noise emissions in decibels

**100** L  
Sum of storage volume of all frozen food storage compartments

**300** L  
Sum of storage volume of all storage compartments without a star rating

## DISHWASHERS



**290** kWh/annum  
Annual energy consumption, based on 280 standard cleaning cycles

**46** dB  
Noise emissions in decibels

**12**  
Capacity in standard place settings

**A**  
Drying efficiency class

**2800** L/annum  
Annual water consumption in litres, based on 280 standard cleaning cycles

All dishwashers must have an A class cleaning performance. Cleaning performance is then no longer indicated on the label.

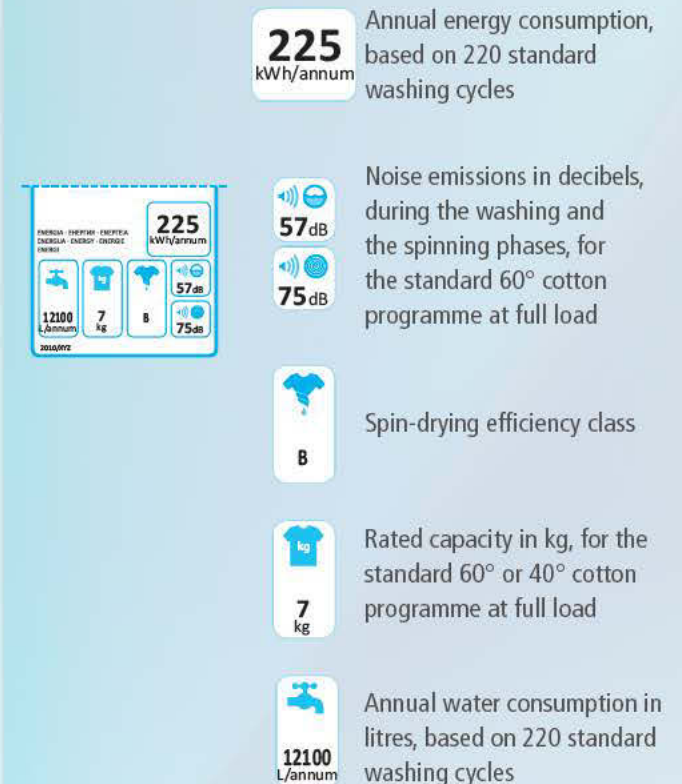
## WINE STORAGE APPLIANCES



**150**  
Rated capacity of wine bottles in number

**45** dB  
Noise emissions in decibels

## WASHING MACHINES



**225** kWh/annum  
Annual energy consumption, based on 220 standard washing cycles

**57** dB  
**75** dB  
Noise emissions in decibels, during the washing and the spinning phases, for the standard 60° cotton programme at full load

**B**  
Spin-drying efficiency class

**7** kg  
Rated capacity in kg, for the standard 60° or 40° cotton programme at full load

**12100** L/annum  
Annual water consumption in litres, based on 220 standard washing cycles

All washing machines with a rated capacity greater than 3 kg, must have an A class washing performance. Washing performance is then no longer indicated on the label.